



# Revolution™ Vibe

A new vision for every heart



GE HealthCare

# Today's challenges at heart



## Cardiovascular disease

is the leading cause of death and healthcare costs worldwide<sup>1</sup>



The average number of cardiac CT procedures performed per site is **expected to increase by 8%**<sup>2</sup>

Cardiovascular disease (CVD) is the leading cause of death and is chiefly responsible for increasing healthcare costs worldwide.<sup>1</sup> The average number of cardiac CT procedures performed at each site is expected to increase by 8%.<sup>2</sup>

This rise in demand for cardiac CT procedures can create a need for additional staff training and overburden radiology department resources.

Additionally, more facilities will need access to the latest cardiac CT capability for diagnosis, treatment planning and post-treatment follow-up across a wide array of patient types. All while carefully managing rising operational costs.



**Consistent, exceptional image quality for every patient**





Effortless cardiac workflow for every user



Elevate your success with lower life cycle costs

# A new vision for every heart

We set out to make a highly accessible cardiac CT scanner that leverages our 160 mm detector coverage optimized for cardiac, Unlimited 1-Beat Cardiac capability and Effortless Workflow for users of all experience levels. A CT that can scan your most challenging patients, whether you are an ambulatory surgery center, an office-based lab, an outpatient imaging center or a cardiology department.

We are excited to introduce you to Revolution Vibe. Our latest cardiac CT scanner that is easy to use and readily accessible for everyone. It is intelligently designed to deliver consistent, exceptional image quality for every patient, reduce scan times, increase patient throughput and even help to lower product life cycle costs.



160 mm detector  
optimized  
for cardiac



1300 mA  
power



19.5 msec  
effective temporal  
resolution



TrueFidelity™ DL



ECG-less  
Cardiac



Effortless  
Workflow





MEMORIAL HOSPITAL  
Matthew Stevens  
CT TECHNICIAN

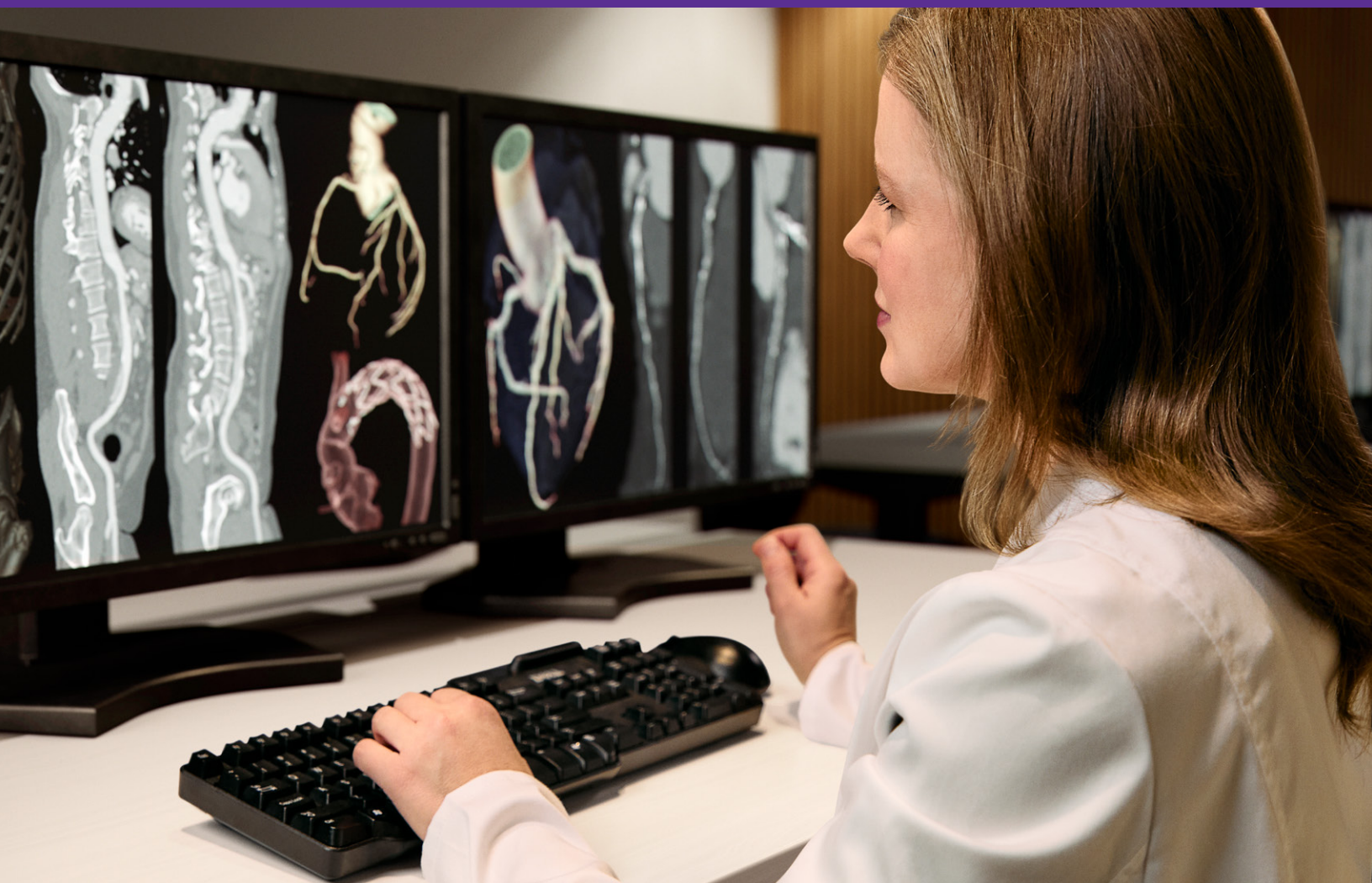


Imaging

# Consistent, exceptional image quality for every patient

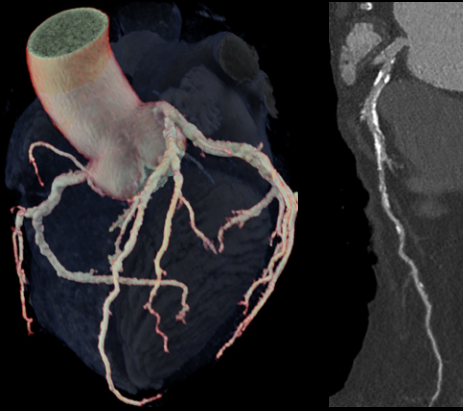
Revolution Vibe's Unlimited 1-Beat Cardiac is designed to provide consistent, high-quality imaging for accurate diagnosis and aid in clinical decision-making, even with your most challenging patients.

We paired the industry's fastest 0.23 sec rotation speed with our cardiac-optimized 160 mm detector coverage. This allows you to scan patients with atrial fibrillation, breath-holding difficulties, heavily calcified coronaries, in-stent restenosis and situations where an ECG trace is unavailable.

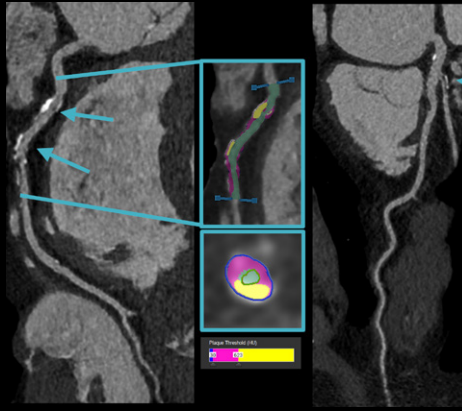


# Unlimited 1-Beat Cardiac imaging

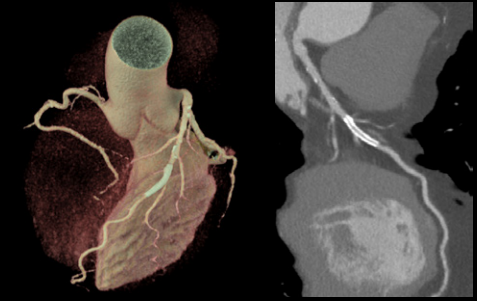
Patient with multiple plaques at low dose



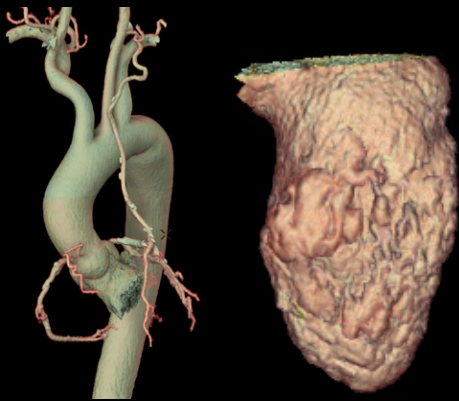
Mixed plaque, no beta blocker



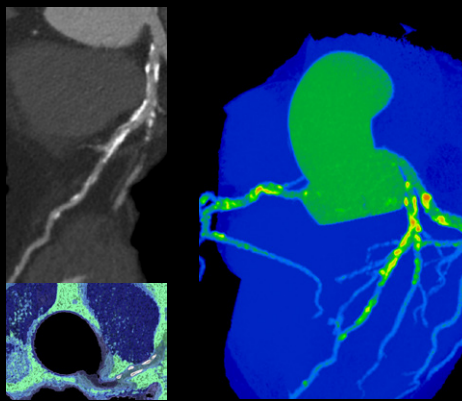
Patient with coronary stents



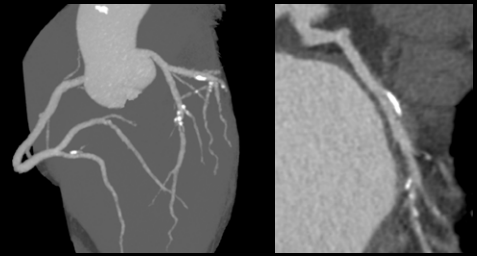
Patient with coronary artery bypass graft



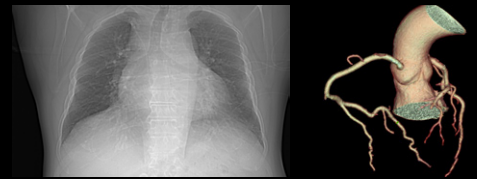
Patient with a high calcium score at low dose



Patient with mixed plaque and high heart rate (90 bpm)

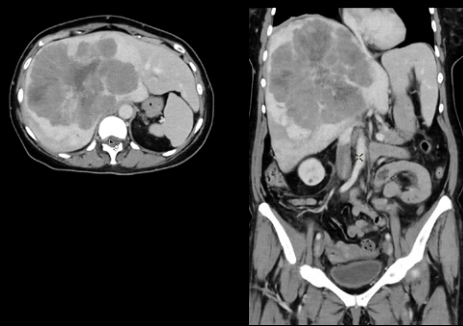


Patient with morbid obesity and atrial fibrillation

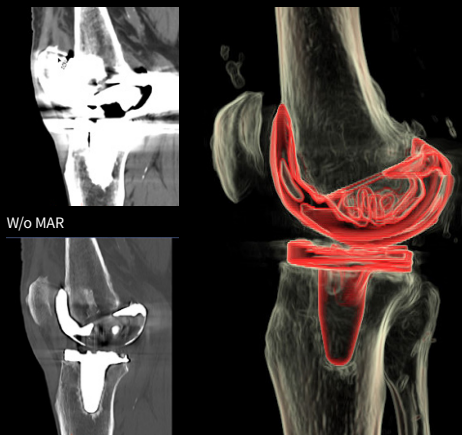


# Exceptional imaging for routine exams

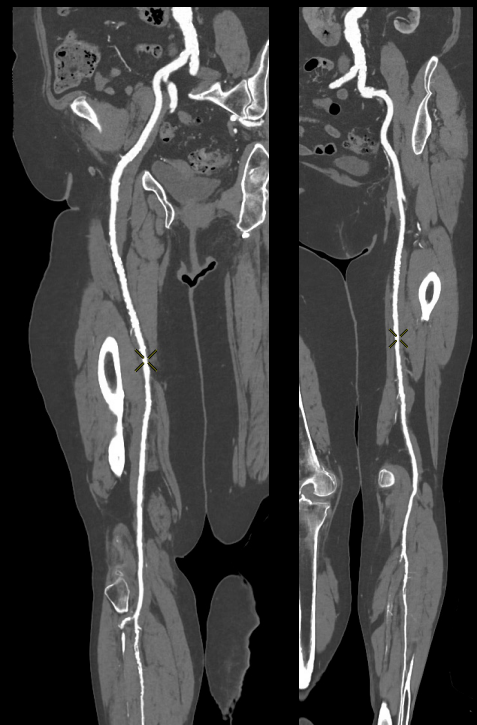
Liver tumor, three phases, chest/abdomen scan



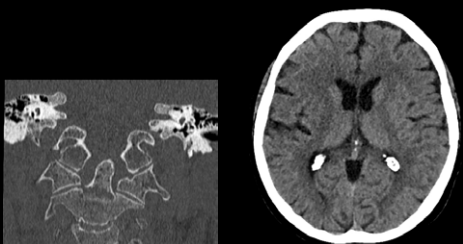
Knee prosthesis scan with metal artifact reduction (MAR)



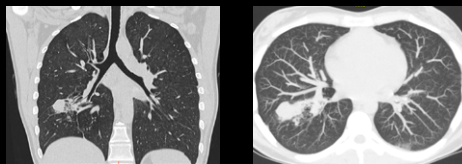
Run-off for high BMI patient with excellent image quality



Brain and C-spine after trauma for detection of dens fracture



Lung tumor detection at extra low dose





Effortless Workflow

# Effortless cardiac workflow for every user

Effortless Workflow intelligently automates your CT workflow from pre-scan protocoling to post-scan processing. It uses AI-based features to help transform the entire CT experience and provides maximum efficiency, accuracy, clarity and consistency.

This enables technologists to quickly and accurately set up scans for each patient regardless of their experience level. The end result is a beautiful CT image acquired in less time.



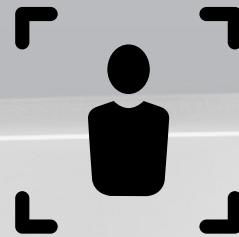
## Patient preparation

Unlimited 1-Beat Cardiac eliminates the need for beta blockers, helping to reduce patient preparation time. Patient setup is also streamlined with ECG-less Cardiac, which eliminates the need for ECG trace placement and monitor connections.



**2-5 min**

reduction in patient preparation time\*



## Pre-scan

Patient setup is a breeze with AI-based protocol suggestions based on each site's individual behavior along with automatic patient positioning. This helps reduce errors and ensures the best possible scanning position for the patient.



Intelligent Protocoling



Auto Positioning



**56%**

reduction in positioning time<sup>3</sup>

\*The claims are based on a comparative study conducted at a customer site. The studies varied by clinical indications, study protocols, and comparison methods. The results and conclusions obtained in these studies are applicable to the specific studies cited and may not be generalizable or reproducible in every practice.





## Scan

Automatic scan ranges along with auto-adjustment of the scan settings can help balance dose and image quality in addition to reducing scan time.



Auto Prescription



Cardiac Auto Gating



Smart Arrhythmia Management



**66%**

reduction in total exam clicks<sup>4</sup>



## Post-scan

Post-processing tasks are streamlined through Prospective Multiple Reconstruction, automated reformatted view generation, along with a suite of intelligent and AI-based applications. All designed to automate your image post-processing and facilitate results sharing.



SmartPhase



SnapShot Freeze 2



CardIQ Suite



**21%**

reduction in total exam time<sup>5</sup>

Manage rising costs

# Elevate your success with lower life cycle costs

We understand that you have many choices when it comes to investing in a cardiac CT scanner. This is why we made sure Revolution Vibe is a wise investment, not only from a technological and operational efficiency standpoint, but from a product life cycle cost perspective as well.

Revolution Vibe is designed with, energy saving and upgrade capability to ensure your CT always runs at peak efficiency. Fleet and contrast management provides you with greater usage optimization. And additional training programs help enhance your staff's expertise. Together, this helps lead to better patient outcomes and long-term savings.



## Fleet management and training

Provides visibility to your entire fleet, including status and configurations. Ongoing education ensures your staff is trained with the latest best practices.



## Contrast media management

Revolution Vibe's innovative technology helps you optimize contrast usage, reduce contrast waste and streamline your CT workflow.



## Energy saving mode

Energy Saving Mode 2.0 enables low-power mode when your scanner is not in use over extended periods of time.



## Smart Subscription

Keep your system at the forefront of imaging with our subscription-based service, which provides access to the latest CT capabilities.





## Revolution Vibe customer experience\*\*

**96%**

scan success rate for all patient types without stepping artifacts

**2x**

increase in patient throughput with optimized scheduling and a 100% recruitment rate

**50%**

time savings on CCTA exams, reducing times from 20 minutes to 10 minutes

**4 min**

of radiologist time saved per scan, allowing for a greater focus on case interpretations

**“We don't have step artifacts anymore and we seldom have motion artifacts. We also didn't have a scan failure in the last two months since installing Revolution Vibe.”**

– Dr. Stephanie Bitschnau, Radiology Specialist, Partner, Radiomed

\*\*The experience varied by clinical indications, study protocols and comparison methods. The results and conclusions obtained in these studies are applicable to the specific studies cited and may not be generalizable or reproducible in every practice.

## About GE HealthCare

GE HealthCare is a leading global medical technology, pharmaceutical diagnostics, and digital solutions innovator, dedicated to providing integrated solutions, services, and data analytics to make hospitals more efficient, clinicians more effective, therapies more precise, and patients healthier and happier. Serving patients and providers for more than 100 years, GE HealthCare is advancing personalized, connected, and compassionate care, while simplifying the patient's journey across the care pathway. Together our Imaging, Ultrasound, Patient Care Solutions, and Pharmaceutical Diagnostics businesses help improve patient care from diagnosis, to therapy, to monitoring. We are a \$19.6 billion business with 51,000 colleagues working to create a world where healthcare has no limits.

Follow us on LinkedIn, X (formerly Twitter), and Insights for the latest news, or visit our website [www.gehealthcare.com](http://www.gehealthcare.com) for more information.

Revolution™ Vibe is CE marked and subject to government regulations and may not be available in all countries. Shipment and effective sale can only occur after approval from the regulator.

<sup>1</sup> Shapiro MD et al. Eur J Radiol. 2008;66(1):37-41. doi:10.1016/j.ejrad.2007.05.006

<sup>2</sup> Pannu HK et al. J Comput Assist Tomogr. 2008 Mar-Apr;32(2):247-51.

<sup>3</sup> The data was based on comparison between GE HealthCare's legacy products (16 ch and 64 ch scanner) and Revolution Ascend that has the same design and workflow as Revolution Vibe in the three institutions using a pilot product and selected routine head and body. The data set of this comparison was 838 exams for legacy products and 1387 exams for Revolution Ascend. The time saving value may not be effective for all institutions depending on the clinical practice. Definition of the scan time is from "Open new patient" to "Confirm setting for Scout".

<sup>4</sup> Compared with legacy GE HealthCare scanner. The required clicks are defined as clicks required to execute a scan from selecting a new patient till start scan. All associated clicks for and in clinical practice, number of the required clicks may vary depending on the circumstances, including but not limited to, the clinical task, exam type, clinical practice, and image reconstruction technique.

<sup>5</sup> The data was based on comparison between GE HealthCare's legacy products (16 ch and 64 ch scanner) and Revolution Ascend that has the same design and workflow as Revolution Vibe in the three institutions using a pilot product and selected routine head and body. The data set of this comparison was 838 exams for legacy products and 1387 exams for Revolution Ascend. The time saving value may not be effective for all institutions depending on the clinical practice. Definition of entire exam time is from "Open new patient" to "Last primary recon completed" for Revolution Ascend and "Close exam" for legacy products.



GE HealthCare